



DERBY MUSEUMS

# IMPACT REPORT

2023-2024

[derbymuseums.org](http://derbymuseums.org)



# PURPOSE AND VALUES

## *Derby Museums is for the thinker and maker in all of us*

We operate as a social and cultural enterprise; business-like, entrepreneurial, but with a profound sense of social purpose.

We care for Derby’s collections of cultural heritage, three museums in Derby, including one UNESCO World Heritage Site, and we welcome over 200,000 visitors each year.

We’re proud to be the home of the largest collection of works by Joseph Wright of Derby in the world, along with 350,000 objects which inspire us to appreciate our world, our city and our homes.

We collaborate with our communities, businesses and individuals to co-produce our Museums. We contextualise global issues by relating and connecting them to local stories.

We are Derby Museums.



*Being independent*



*Fostering a spirit of experimentation*

*Pursuing mutual relationships*

**OUR PURPOSE AND VALUES**



*Creating the conditions for well-being*

*Proving that we are doing it*



# WELCOME

On behalf of the trustees of Derby Museums Trust, I am delighted to introduce the 2023-2024 Impact Report which will again demonstrate the importance of Derby Museums as free, safe and welcoming spaces of discovery in the heart of the city of Derby, which must be preserved, supported and available for all to enjoy. It is a privilege to work with the passionate directors, staff and volunteers who are totally dedicated to delivering an inclusive, high-quality and exciting visitor experience.

Despite significant financial challenges, these pages will show how our Museums continue to inspire, educate and connect people of all ages and backgrounds. This year we welcomed new visitors, curated fascinating and innovative exhibitions and expanded our outreach to more schools, communities and families, enriching minds, bringing joy and setting many on a life-enhancing journey of discovery. Our exhibitions spark curiosity and new conversations, while our educational initiatives have made art, history and the relevance of science and technology accessible to thousands.

We are grateful for the support of our makers, our visitors, funders, donors and partners, who all make this vital work possible. Together, we are building museums that not only preserve and celebrate the amazing history of Derby and its worldwide significance, but also explore the historic and cultural giants whose legacies still have a lasting impact in our community and inspire the creativity so essential for the continued innovative spirit and commercial success of our city and county.



Elizabeth Fothergill CBE  
HM Lord-Lieutenant of Derbyshire  
and Chair of Derby Museums

Each year Derby Museums presents its successes and impacts and this is no other in that respect. For me, this years' achievements have been all the more impressive due to the adverse circumstances our organisation has faced. These times could not be more financially challenging, our public funding continues to fall and we have doubled our efforts to earn income from projects, trusts and foundations and sponsors. Compared to most civic museums our income is more mixed and diverse, providing excellent value for money for our city.

Moreover, the catastrophic flooding of the Museum of Making in 2023 and its closure for three months, meant we had to be more inventive and innovative to ensure we continued both to care for Derby's manufacturing heritage and give young people the best experiences to fulfil their ambitions to be creative human beings.

The future remains challenging, with diminishing funding and increased costs. However, with unprecedented numbers of people visiting our sites and enjoying our activities, the need for Derby Museums seems greater than ever.



Tony Butler  
Executive Director,  
Derby Museums

IN 2023-24  
WE ACHIEVED...

**204,101**  
visitors to  
our venues  
(199,459 in  
2022-23)



**10,132**  
volunteer  
hours given  
(10,868 in  
2022-23)



**42,194**  
children and young  
people took part in  
activities and visits  
across our sites  
(53,100 in 2022-23)



**2** rarely seen  
Joseph Wright  
paintings  
acquired on  
long-term loan



**1** child  
who donated  
their birthday  
money to our  
flood appeal



**8,514**  
school children  
engaged (7,239  
in 2022-23)

# WE INSPIRE CHILDREN AND YOUNG PEOPLE, FOSTERING A SPIRIT OF EXPERIMENTATION

Through our partnerships with schools and businesses, we create a significant impact on the lives of young people in the city.

Derby Museums' overarching learning framework is the Institute of STEAM (Science, Technology, Engineering, Art and Mathematics), funded by Rolls-Royce. This is an interdisciplinary approach where young people learn to understand the world and people around them through creative, enquiry-based and critical thinking.

Informal family learning is the most extensive means for people to engage with cultural heritage within Derby Museums. In 2023-24 we engaged 8,514 school children, a further 1,326 students in higher or further education and 15,236 children, families, young people and adults in informal learning activities including workshops, courses, special events, talks, tours and bespoke projects.

Public programme events included drop-in school holiday activities and more structured activities such as STEAM Babies, for ages 0-2 years, and STEAM Tots, for ages 2-5 years. These STEAM sessions focus on loose parts play, offering a sensory and playful exploration of objects and materials designed to stimulate children's curiosity, imagination and experimentation.

**IN 2023-24**

over **42,000** children visited one of our three Museums

**135** schools in Derby and Derbyshire engaged with Derby Museums



**The Makory, our mobile Museum of Making, attended six community events engaging 750 local people**

*"Year 6 had a fantastic time at Derby Museum learning all about the artist Joseph Wright as part of this term's enquiry. They loved seeing the actual paintings by the artist they had been learning about in school"*

School teacher following a 'Lets Read Wrights' facilitated session



Our formal learning programme delivers popular sessions supporting curriculum-based activities such as the Romans, Ancient Egypt, World War One and art based on the Joseph Wright Collection. Derby Museums also supported 47 Travel and Tourism students with their career development through work with Derby College as an Employer Academy. A Virtual School afterschool provision was established with Derby City Council, teaching looked-after children how to make and repair clothing, screen print and use workshop equipment.

In 2023-24, the Makory, our mobile Museum of Making, visited areas of the city where we know there is low participation in cultural activity. It went to several locations and events during the year, including the Arboretum Park Family Fun Day and the Derby City Council Becket Family Hub Fun Day. Through activity on the Makory, 750 local people were engaged with Derby Museums.

Our learning programmes enable young people to develop the capacities necessary to thrive in the future; to be curious, empathise and innovate – think, feel and do.





## ENGAGING OUR COMMUNITIES

A wide programme of exhibitions and events take place at Derby Museums' three sites, responding to current dialogue and attracting a broad audience.

Derby Museums has supported the Derby Creative Sanctuary Group of 18 people who have sought refuge in the UK from countries such as Chad, Iran, Honduras, Ecuador and Sri Lanka. They meet regularly in the Museum of Making and take part in making activity linked to their ESOL (English as a Second or Other Language) learning programmes. The group was also involved in the redevelopment of Pickford's House.

At the Museum of Making, a 15-week arts programme with a focus on craft and making ran as part of the National Saturday Club initiative. The club brought together 13-16 year olds to develop creative, technical and practical skills aligned with Craft practice and careers. Members were introduced to materials and processes inspired by Derby's extensive industrial and creative heritage to make objects that mattered to them today. Themes included textiles, ceramics, woodwork and jesmonite.

Our team worked with Derby-based charity Upbeat Communities to complete Refugee Awareness Training, making our spaces a more welcoming place for our communities.

The Haida ceremonial spoon has been identified as an object of interest through connection with First Nations Communities in Canada. It has been agreed that the object will be repatriated in the winter of 2025.

We developed a second iteration of the History Makers exhibition and associated programme – *History Makers: Unfolded* – which ran from 22 July 2023 until 10 March 2024. We worked with a wide variety of partners, including the Indian Workers Association, Women's Work, W.W.Winter, Derbyshire LGBT+ and local campaigners.

### Empowered Adornment - Women of Derby



***"I've decided to do GCSE Art and I want to be a tattoo artist. The Club taught me about lots of different art styles. I liked doing the clay, but it was hard as it would dry out and you had to avoid making cracks."***

National Saturday Club member

# WE CONSERVE AND ENHANCE OUR COLLECTIONS

Derby Museums is responsible for the care of 350,000 objects in the city's collection. More of these collections are now on display than ever before. Despite this, many items remain in storage. Current Museum storage has become increasingly unfit for purpose and we have been working with Derby City Council on a masterplan to identify a long-term sustainable and accessible storage site to house our collections.

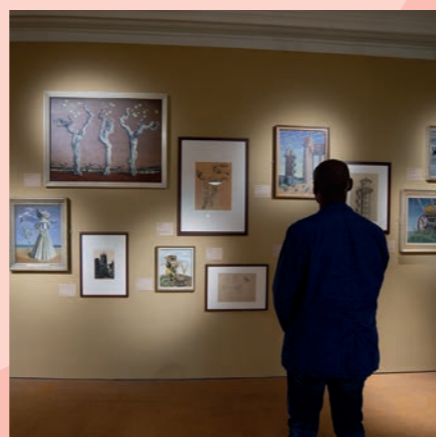
In the summer of 2023, two rarely before seen 'candlelight' paintings by Joseph Wright were unveiled at Derby Museum and Art Gallery. The works, titled *A Girl Reading a Letter with an Old Man Reading over her Shoulder* and *Two Boys Fighting over a Bladder*, are on long-term loan from a private collection.

Thanks to a grant from the DCMS/ Wolfson Museums and Galleries Improvement Fund 2022-24, improvements are being made to the interpretation and access at Pickford's House. Extensive co-production sessions with community groups, young people, staff and volunteers have identified new and more coherent narratives. This involves foregrounding the experiences of women and children in the life of the building and the removal of barriers to enable closer engagement.

During 2023-24, considerable progress was made on research and conservation of our Egypt collection. A conservation assessment of the two Egyptian mummified humans in our collection took place, funded by the Pilgrim Trust. The findings of this report will help us to take forward the necessary cleaning and stabilisation required to conserve the cartonnage covering of Pa-Sheri and remove a layer of industrial grime that had built up on top of Pypyu's coffin during his display in Derby over the turn of the nineteenth and twentieth centuries.

A research trip to Egypt was undertaken by two members of staff in December and January 2023-24 where strong relationships were built with Egyptian specialists who generously supported the visit with their time and knowledge. The trip enabled us to identify where some items from our collection came from for the first time, including a tomb relief from El-Kab (c. 1550-1292 BCE) that was previously attributed to Edfu. A relationship with the Futures International School of Luxor was also formed and replicas of our collection were handled and discussed by students.

Derby surrealist artist Marion Adnams was the inspiration for a new permanent display 'Into the Enchanted Country' which opened in the autumn of 2023 at the Museum and Art Gallery.



# 1

Arts Council England  
Designated collection of  
outstanding significance

# 200

individual objects acquired  
from over 30 donors

# 4,266

database records  
created or updated

# 4

groups of objects  
acquired through  
the Treasure process

# 1,923

archaeological finds  
recorded by Derbyshire  
and Nottinghamshire  
colleagues through the  
Portable Antiquities Scheme

# 350,000

items in Derby Museums'  
collections



# WE BRING PEOPLE TOGETHER, BUILDING SKILLS, CONFIDENCE AND CREATIVITY

Volunteering continues to be at the heart of Derby Museums' ethos, with volunteers supporting with coproduction, research, collections care, visitor welcome and championing all things Derby Museums. Our volunteer team continues to grow, with new friendships made, new skills learnt and creativity abundant.

Volunteers have helped to research and catalogue five areas of our collections: etymology, Marion Adnams, Museums history, toy theatres and the Joseph Wright collection. This has improved the knowledge and accessibility of our collections for the future. Volunteers also joined staff on a research trip to Manchester Museum where they learnt about Ancient Egypt and exchanged best practice on engaging with visitors about human remains in museums. Connections with the University of Derby led to History 'Flash Mobs' at the local studies library, with groups of students conducting research into Pickford's House.

Throughout 2023-24, the model railway volunteer team have made a cow shed, a flock of sheep, a standing stone circle and much more, attentively maintaining the historic and much-loved model railway at the Museum of Making.

Workshop volunteers have continued to make fixtures and fittings for our Museums, including turning new handles for drawers using the wood lathe, forging display pieces for galleries and preparing materials for workshops and more – learning new skills along the way.

The volunteering team have taken part in training sessions including LGBTQ+ awareness, South Asian Histories and Egyptian antiquities in European Museums, building new skills and knowledge for personal development and to enhance the visitor experience.

Over the last year, we have enjoyed the opportunity to bring our Derby Museums Friends closer to our collections through a programme of talks and exclusive coffee mornings providing opportunities for Friends to get more involved. Coffee mornings have provided Friends with a guided tour of the *History Makers: Unfolded*

exhibition with Head of Curatorship, Sally Hawley, a deep dive into the Alfred Goodey Collection of old Derby pictures with Senior Curator of Fine Art, Lucy Bamford, and a behind-the-scenes look at the collections for the upcoming Celanese exhibition with Collections Manager, Spencer Bailey.

We are grateful for the ongoing support of the Friends who generously backed our Egypt, Hogarth and flood recovery appeals and who so enthusiastically support our work through sharing their time and passions with our team and visitors.

***"We joined the Friends scheme two years ago and felt welcome right from the start. Friends events are the perfect mix of education and entertainment. It's lovely to learn about the city's well-deserved place in history. It's also great to see how Derby Museums truly engages with the local community."***

**A couple who recently joined Derby Museums Friends**

## VOLUNTEERS AND FRIENDS



**190**  
volunteers  
regularly  
giving time



**189**  
Derby  
Museums  
Friends



**10,132**  
volunteer hours  
generously given  
across three  
Museum sites



## WE ARE DERBY

Our Museums attracted more visitors in 2023-24 than 2022-23, despite the Museum of Making's closure for three months due to flooding. Of our 204,101 visitors, approx. 63% were from outside of the local area. The Museums remain the principal attractions in the local visitor economy, contributing almost £9 million to the local economy each year.

**204,101**  
visitors engaged

approx.

**128,584**  
visitors from outside of the local area

approx.

**37%**  
of visitors from the local area

estimated

**£8.8m**  
contributed to the local economy

Through events and exhibitions, our Museums help people look at the world differently, learn more about their city and feel pride in the place where they live.

Derby's identity is 300 years in the making, and the Enlightenment spirit of creativity and invention resonates today. The Museum of Making is home to collections celebrating the work of Rolls-Royce, the Midland Railway, Andrew Handyside and Co, Qualcast, Aiton & Co, London Midland and Scottish Railway, Celanese, Stanton Ironworks and more.

The heritage of the city is utilised to frame ambitions for the future, both as one of the UK's top high-tech cities and as a principal centre for manufacturing and sustainable engineering. Derby Museums partnerships with industry are integral to providing young people with the inspiration and experience to pursue a career in industry.

## MAKING OUR CITY A BETTER PLACE

### *Our place and significance in Derby and within the sector is recognised nationally and internationally*

Derby Museums was established as an independent charitable trust in 2012. Since then, it has transformed the way cultural heritage is presented and appreciated in the city of Derby. In 2024, the Museum of Making received a Special Commendation in the prestigious European Museum of the Year Award – the only UK museum to do so. Organised by the European Museum Forum, the Award represents the best in innovation and excellence in new or redeveloped museums, with the aim of recognising and developing the quality of the European museum scene.

The Museum of Making was awarded the bronze award for 'Visitor Attraction of the Year' in the Peak

District, Derbyshire & Derby Tourism Awards. The award recognises visitor attractions that provide memorable visitor experiences and demonstrate excellence across every aspect of the business.

Derby Museums has a tangible impact on its community. It contributed an estimated £8.8m to Derby's Gross Value Added economic benefit in 2023-24, compared to £7m in the previous year. Its work improves the well-being of visitors and participants, especially through work with those in more marginalised communities such as the extended schools programme with looked-after children and ESOL learning with refugees and people seeking asylum.

In 2023, we published a report exploring the Social Return on Investment (SROI) of the Museum of Making for our city. This report identified that for every £1 invested in 2021-22 operations, Derby Museums can claim a social return of £5.86 lasting over the next five years.

As a result of engaging with the Museum of Making, volunteers reported a notable increase in their confidence and self-esteem, while visitors were found to be more receptive to the city's wider cultural offer and local makers were found to benefit from the Museums' peer-to-peer networking opportunities.

We would like to thank all of our donors and funders for their ongoing support.





# WE INSPIRE MAKERS

*"I am SO grateful for the opportunity you gave me. It was the pinnacle of my experience as a trader!"*

A maker showcased in our retail spaces



**£17,000** generated for Derbyshire makers through our shops



**55** makers showcased through 'Let's MAKE Christmas', our seasonal retail campaign



**3,664** engaged in our STEAM Tots and Babies sessions



**1,048** engaged in on-gallery activities ranging from traditional rope making to LEGO challenges



**143** engaged in 'Makeable Workshops' for families, with sessions including macrame, laser cutting, rag rugging and copper embossing

Derby Museums is for the thinker and maker in all of us. Our Workshop at the Museum of Making continues a 300-year legacy of making on the Silk Mill site. The Workshop is fully kitted out, offering state-of-the-art facilities to deliver an authentic and practical making experience. Members and course attendees can develop their existing creative practices or work with technicians to learn completely new skills in a supportive space.

Partnerships continued with education providers, individual makers, small businesses and larger organisations such as the Heritage Crafts Association, who hosted the launch of their Red List of Endangered Crafts and the 'Culture in the Making' conference at the Museum of Making. 120 students took part in Red List making activities as part of a Discover Creative Careers event.

Our retail spaces feature products sourced from makers, creators and designers from across the region and including bespoke ranges produced for and with Derby Museums.

This year we have continued to build on our collaborative ethos, partnering with a range of artists and cultural organisations in our making activity. In 2023-24 we partnered with makers Abigail Wastie and Adam Blencowe to prototype a series of making workshops for young people using sustainable materials and production methods.

At the Museum of Making, Makers-in-Residence Sane Mafa and Josh Nicholson undertook six-month residencies giving them the time and space to develop their creative practice with access to workshop facilities and mentoring. Sane is an interior designer who has developed a new biomaterial made from cow manure. Josh is a writer and artist who focuses on ideas around storytelling and products about Derbyshire narratives, primarily exploring gothic and cartoon aesthetics. The Space to Grow Residency is generously supported by Arts Council England.



Introductory and advanced courses provide opportunities to learn new skills and develop existing experience in a variety of disciplines. In 2023-24 these included ceramics, woodturning, dressmaking, metalwork, weaving and producing mallets from recycled milk bottles.

# MUSEUM OF MAKING

In March 2023, Photographer Oliver Frank Chanarin's first solo exhibition *A Perfect Sentence* opened as part of the FORMAT23 International Photography Festival – the UK's leading international contemporary festival of photography. The winter saw a giant, scale LEGO® model of England's Lake District delight visitors to the Museum of Making.

From July, *Standing in this Place*, an installation co-created by sculptor Rachel Carter, was in situ across the galleries. It highlighted the contributions and connections between white mill workers and black enslaved women uprooted to the Americas, showing how their stories and histories are connected by cotton, sorrow, strength and resilience, thereby giving a voice to the women of the past.

In October 2023, the Museum of Making was forced to close for three months due to significant flood damage caused by the severe weather conditions of Storm Babet. The majority of losses were covered by our insurance policy, a recovery grant from Arts Council England and kind donations from the public. After an extensive cleanup, we re-opened at the end of January 2024 and were delighted to welcome 2,500 people back over the first weekend.

We would like to thank

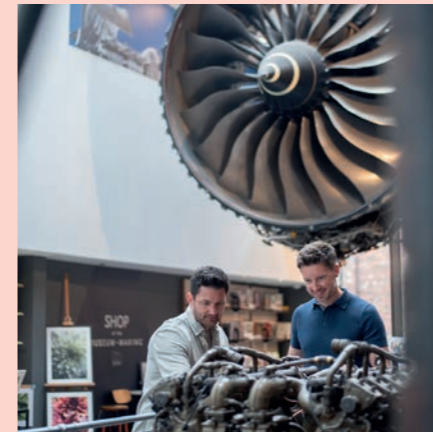
- Arts Council England, DEFRA and all the individuals, organisations and businesses who helped us to recover from the October flood.
- National Lottery Heritage Fund, Black Country Visual Arts, Indian Community Centre, Pakistan Community Centre Derby, Derby Asian Strategic Partnership, the University of Derby, Derby Local Studies and Family History Library and W.W. Winter photography for their support for the Derby Yaadaañ Archive – a project to tell stories of South Asian communities in Derby between the 1950s-1980s.
- Rolls-Royce, IMI and Vaillant for their generous support of our learning programmes.



**102,605**  
visitors



**7,313**  
people  
participated  
in our informal  
learning  
activities



**2,718**  
school  
children  
engaged in  
educational  
visits



***“My son and I  
have probably visited  
6-7 times in the past year.  
He is 4 (we started coming when  
he was 3), and it’s one of his  
favourite places. It’s amazing that  
it is free and it is a truly  
wonderful place.”***

**A supporter who donated  
to the Museum of Making  
Flood Appeal**



# MUSEUM AND ART GALLERY

April began with a world-class exhibition showcasing the work of 18th Century artist William Hogarth, produced in collaboration with the National Gallery and the National Portrait Gallery as part of its National Skills Sharing Partnership Programme. *Hogarth's Britons: Succession, Patriotism, and the 1745 Jacobite Rebellion* brought together 84 loans from 18 lenders including the National Gallery, the British Museum, the V&A, National Galleries of Scotland and the Foundling Museum.



**85,738**  
visitors

*History Makers: Unfolded*, an exhibition co-produced with artists and activists designed to empower visitors, opened in July. The exhibition focused on the diverse stories and inspiring legacies of remarkable women and gender-diverse individuals in Derbyshire, including jewellery designer Anisha Parmar whose work takes inspiration from her family's journey from India, and photographer Kate Bellis who has documented women working in agriculture and quarrying across Derbyshire.

**4,786**  
school children engaged in educational visits

The Alfred Goodey collection of 'old Derby' paintings was the focus of *A View of Derby*, a temporary exhibition which ran throughout March.



Gallery spaces were enhanced with changing displays, new Joseph Wright loans, a new Sculpture Gallery and co-production workshops for the reinterpretation of the Bonnie Prince Charlie Room and Jacobite display which is bringing together academics, scholars and museum professionals as a legacy to *Hogarth's Britons*, supported by the Headley Trust.

**7,310**  
people participated in our informal learning programme

**84**  
loans to our *Hogarth's Britons* exhibition

**"Amazing museum!  
Looks really small on the outside but spans really far back!  
Lots of wonderfully informative and carefully curated exhibits.  
Would recommend everyone going.  
Make a great family day out or just for a small group. Very helpful and knowledgeable staff. Will go again!"**

A visitor to the  
Museum and Art Gallery

Work is also underway to develop the nature and archaeology displays over the next two years, thanks to National Lottery Heritage Fund support.

We would like to thank

- The National Lottery Heritage Fund, Pilgrim Trust, Foundation Derbyshire – The Tom Carey Fund, MX Display, Derby Museums Friends, The Bemrose School, Aboretum Primary School and Futures International School in Luxor for their involvement in the preparation for our summer 2024 exhibition *Displaced: From the Nile to the Derwent* exhibition.
- Foundation Derbyshire - The Freemasons of Derbyshire Fund for their investment in performance equipment for the Wardwick.
- The National Lottery Heritage Fund for their investment in the re-development of the Notice Nature and Archaeology displays.
- Weston Loan Programme with Art Fund, The Duke of Devonshire's Charitable Trust, Marketing Derby, The Headley Trust, Paul Mellon Centre for Studies in British Art, National Gallery, National Portrait Gallery, University of Derby and the generous individuals who supported the *Hogarth's Britons* exhibition.





## PICKFORD'S HOUSE

*"We came with our grandchildren, from start to finish both of the girls loved it. Trying clothes on, drawing and colouring in. I think they would have liked to stay much longer. The girls really loved it, so we will be returning very soon."*

A visitor to Pickford's House

**15,758**  
visitors



**537**  
school children engaged in educational visits



**613**  
people participated in our informal learning programme



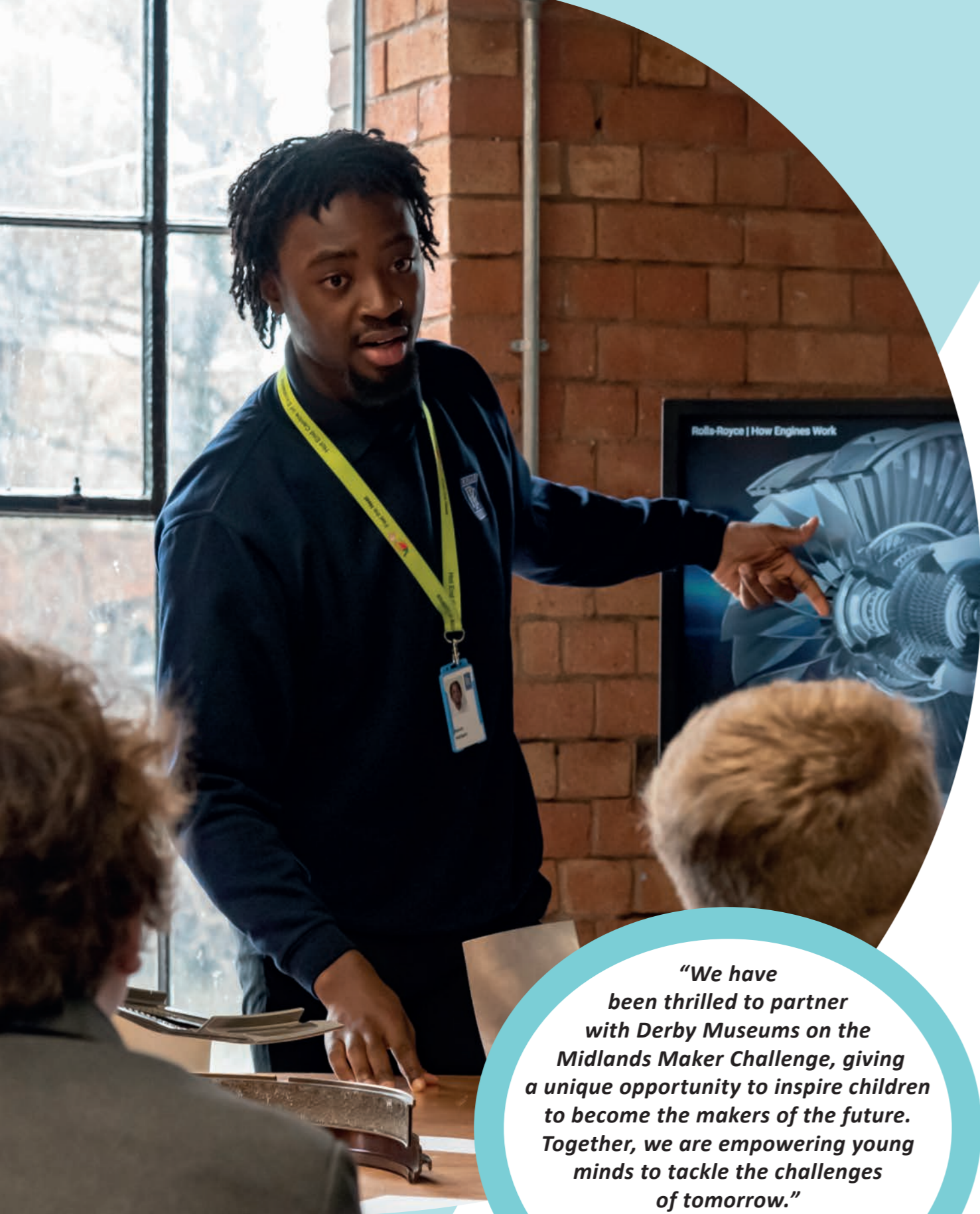
Through the DCMS funded Reimagined Home project, material improvements have been made to the display, interpretation and collections at Pickford's House to enhance the visitor experience and improve access for disabled visitors. Working with communities, we used Human Centred Design methodology to inform the rewriting of interpretation to better illustrate new narratives that the coproduction process highlighted as important to visitors.

Alongside this, a temporary exhibition, *Peacock Revolution*, featured a private collection of men's fashions from the late 1960s owned by collector Peter Feely.

This year's programme of informal learning activity at Pickford's House included making activities, nature trails, historical re-enactments, informative talks and the annual Christmas at Pickford's House family day out.

We would like to thank

- DCMS/Wolfson Fund for their support to redevelop Pickford's House through the Museums and Galleries Improvement Fund.



***“We have been thrilled to partner with Derby Museums on the Midlands Maker Challenge, giving a unique opportunity to inspire children to become the makers of the future. Together, we are empowering young minds to tackle the challenges of tomorrow.”***

**Claire Kennady,  
Senior Learning, Development  
and Talent Manager  
at IMI plc**

## WORKING IN PARTNERSHIP



**7,755**  
young people  
directly engaged  
through the  
Institute  
of STEAM



Derby Museums continues to build on its collaborative ethos, partnering with a range of artists and cultural organisations to amplify culture and tourism across the city. In 2023-24 we co-produced Derby Dishes, an evening of food and entertainment with Derby CAN and Maison Foo as well as Hello Derby, a celebration day for Derby Refugee Week. We collaborated with Déda to co-produce the Festé Community Procession, attended by around 1,200 people, culminating in the spectacular Delrevés’ Finale – a stunning aerial ballet performance on the Museum of Making tower.

We moved into the fifth year of our Institute of STEAM partnership with Rolls-Royce, enabling us to update, create and prototype curriculum-based STEAM sessions for schools, deliver a series of CPD sessions for Educators and a packed programme of workshop courses, on-gallery makes and family activities at the Museum of Making. A Building Futures British Science Week event led by Rolls-Royce graduate trainees and apprentices saw over 100 students engage with pathways into engineering.

IMI Plc continued to support the Midlands Maker Challenge, a programme focusing on building inquiry and teamwork skills amongst school children in the Midlands. In 2023-24, 51 pupils formed teams to respond to the challenge of climate (in)Action, working with engineers, entrepreneurs and inventors to develop and present their ideas in response to the climate challenge. Solutions ranged from the tangible and possible to blue sky, out the box thinking such as toothbrushes that don’t require water, solar panels that better blend into nature and mechanical automated manta rays that eat plastic.

A multi-year partnership with Vaillant was developed, securing three years of funding for Assemble: Derby’s Making Festival, the creation of a new Power Pod display at the Museum of Making and new investment to help Derby Museums develop future engineering skills in the region.

In partnership with the Bowes Museum and US-based National Arts Strategies, 20 fellows were recruited to the UK Creative Community Fellowship programme. Funded by Arts Council England, this project supports artists, community leaders and practitioners to drive physical and social transformations through arts and culture.

In 2023-24, we came together with a range of partners to produce a series of First Fridays after hours events to diversify our audience. Events included the ‘First Derbyshire Drag Showcase’, produced with Nottingham Drag performer Liv, the ‘Queer Folio Scratch Night’ an Arts Council England funded project co-produced with Derby-based 1623 Theatre Company reimagining Shakespeare’s work through a queer lens and ‘Carry On Hogarth’ with the University of Derby which took a tongue in cheek look at the *Hogarth’s Britons* show.

We continue to be a partner in local cultural activity such as Derby Folk Weekend, Furthest from the Sea Festival, Derby Book Festival and Derby Poetry Festival - where our partnership helped leverage funding to bring American poet Terrance Hayes to Derby for the first time.

# ENVIRONMENTAL SUSTAINABILITY

Representatives from Derby Museums were integral to the organisation of the first-ever Museums Conference of Parties (COP), held at Tate Modern in October 2023. Organised by the National Museum Directors' Council, the Museums COP featured contributions from Derby Museums and it secured consensus from museum leaders on collective action to decarbonise the sector and mitigate the impacts of the climate emergency.

Following the flooding of the Museum of Making, we have worked to update our comprehensive flood management and salvage plan. This sector-leading work has been shared across the museums sector as an example of best practice and now, in the tidemarks across our building, the Museum of Making's fabric tells the story of the devastating impact of climate change.

Environmental sustainability is woven through our learning programmes at Derby Museums. Pickford's House garden-based activities encourage young children to take time to notice nature, follow their curiosity and learn respect for the natural world. Activities in 2023-24 included making seed bombs and learning how to encourage biodiversity in home gardens, an initiative in collaboration with BBC Wild Britain. Earth Day 2023 saw a host of activity at the Museum and Art Gallery with local 'nature regenerators' from Down to Earth Derby demonstrating worm composting, Derbyshire Wildlife Trust sharing the importance of ponds for wildlife and our Museum team facilitating paper pot making, recycled bird feeders and nature pledges.

An Energy Inspiration Day created with Rolls-Royce and Sinfonia Viva saw over 100 students engage with climate change workshops. Energy Outreach sessions developed by the Museums' learning team shared learnings about the climate emergency by designing wind turbines. The project concluded with a climate-inspired concert at the Museum of Making.

Carbon Literacy Training has been rolled out to key team members during 2023-24.

Our retail and catering offer continues to showcase the best of local produce and growers, sourced from within a ten-mile radius wherever possible.

In 2023 we also chose a new cleaning company, Upbeat Clean, a social enterprise that works with refugees and asylum-seekers new to Derby, providing individuals with ethical and supported employment.



# FUNDRAISING

## Derby Museums Endowment

Derby Museums would like to thank supporters and the National Lottery Heritage Fund for generously helping to build our £2m endowment. In 2023-24, £60,000 from the invested capital sum contributed to Derby Museums unrestricted income.

## Partnerships and Corporate Sponsorship

Derby Museums are thankful for the local business community who continue to generously get behind our work. From Stowe Family Law, Cosy and MX Display whose donations have supported on-gallery activities and the delivery of *Displaced: From the Nile to the Derwent* exhibition, through to the wider partnership support from Rolls-Royce, IMI and Vaillant, without whom we would not be able to deliver STEAM learning across our three sites.

## Trusts and Foundations

We are grateful to the eleven Trusts and Foundations that generously supported our work. With this support we were able to undertake the capital project at Pickford's House, develop an Easter and summer holiday programme for young teens and develop the Derby Yaadaañ Archive. Through the Resilience, Relevance and Recovery project we have been able to undertake a full external business review and invest in fundraising to increase our organisational resilience.

We were thankful to also receive additional support from Arts Council England and DEFRA to aid our recovery from the October 2023 floods.

Grant funding has also supported a capital investment in the Wardwick, the development of an international school's project bringing children's voices into our Egypt exhibition and has funded exploratory work to investigate the potential to clean and conserve the two ancient Egyptian mummified people in our collection.

## Individual Supporters

We would like to thank supporters who generously got behind our Museum of Making Flood Appeal helping us to re-open our doors just three months after the October 2023 floods.

We would also like to extend a special thank you to Patricia Rooks whose generous support has enabled us to create the Marion Adnams display and the support of an anonymous donor, and local longtime admirer of John Blakemore's work, who helped us to acquire a collection of his works, as well as four portraits by photographer Kate Bellis.

We would also like to thank every visitor who donated through any of our donation boxes across our three sites, raising £54,137 to help in our ambition to remain fantastic and free.

210 supporters generously donated £10,835 through our Buy a Bird and Adopt an Object on-site giving schemes, supporting family activities and helping ensure Derby Museums continues to be an inspiring place for everyone. That is the equivalent of funding 108 community outreach activities and SEND sessions or funding the activity materials for 216 under 5s sessions.

## Derby Museums Friends

A huge thank you, as always, must go to the Derby Museums Friends who are relentless in their support for and advocacy of the work we do. The Friends backed our Egypt, Hogarth and flood recovery appeals and continue to be a great support to us when we seek to acquire new items for our collections.

## Legacy and In-memory Donations

We would like to express our thanks to the personal representatives in the Estate of the late Margaret Mallender, for disbursing a generous donation in support of our work.

Our thanks also go to the 24 supporters who decided to remember a loved one through our Adopt an Object and Buy a Bird schemes. We are grateful to the 11 generous supporters who have pledged a gift to us in their Will. This philanthropy will support our resilience into the future.

# 11

Trusts and Foundations

# £2,445

donated by Derby Museums Friends to our Egypt Exhibition Appeal

# 4

major corporate partnerships

# £3,835

donated through monthly donations

# 4

corporate supporters

# £10,835

donated through our on-site adoption/Buy a Bird schemes

# £13,692

donated to our Museum of Making Flood Appeal

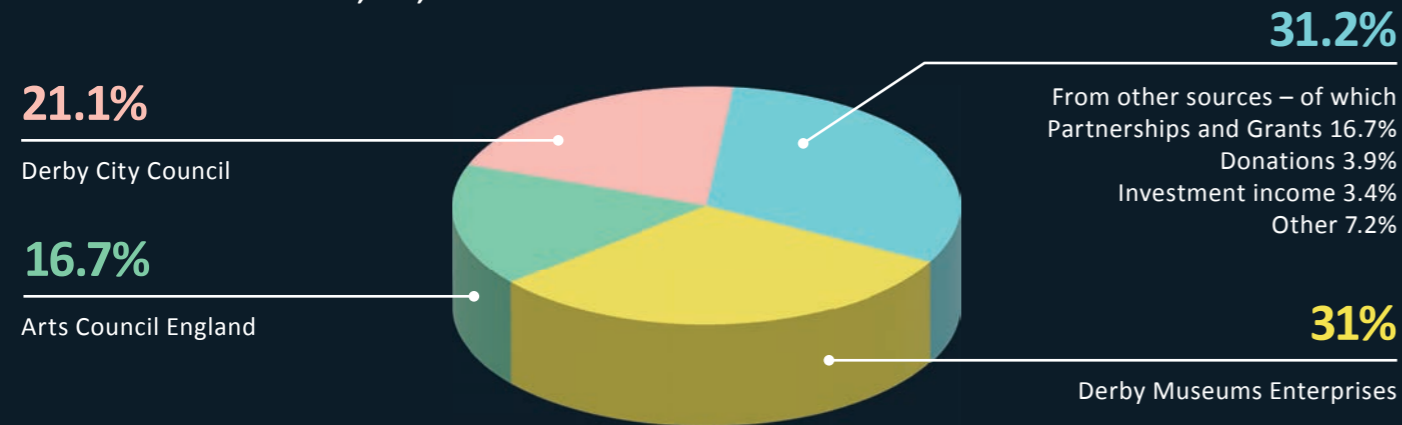
# £54,137

donated through donation boxes



## WHERE THE MONEY COMES FROM

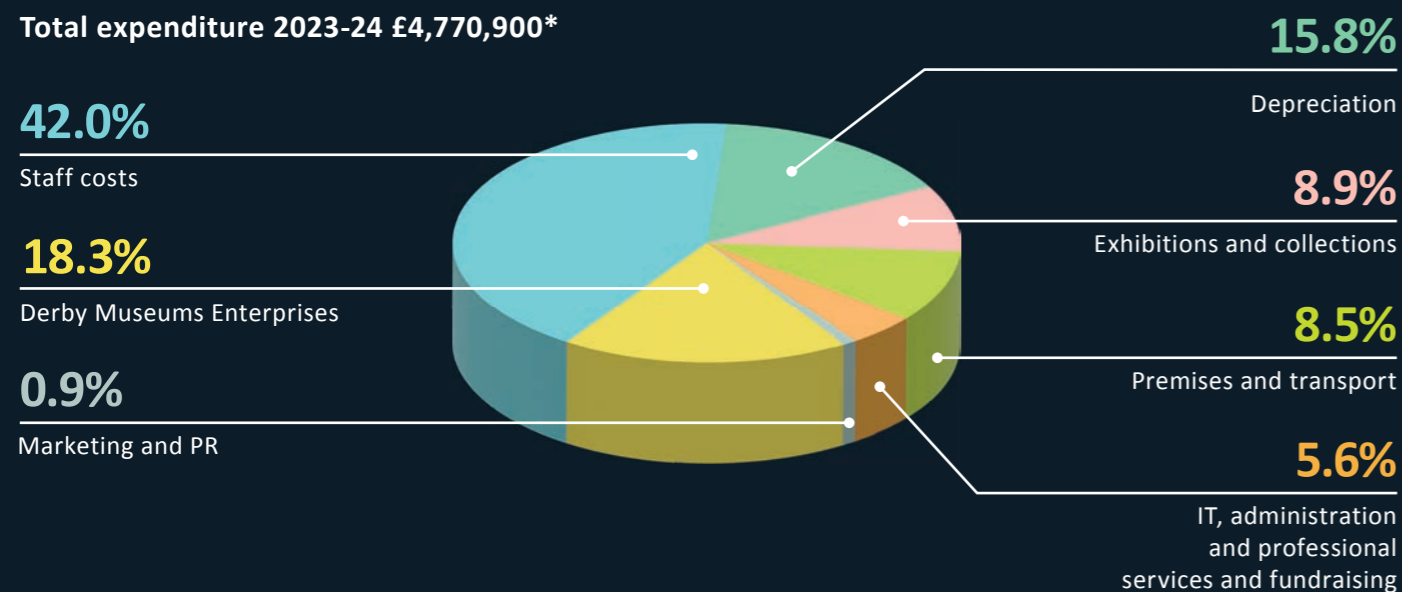
Total income 2023-24 £3,285,015



## WHAT THE MONEY WAS SPENT ON

*When it comes to running three museums, we make every penny count*

Total expenditure 2023-24 £4,770,900\*



\*The funding gap was met in 2023-24 from unrestricted reserves

## ACKNOWLEDGEMENTS

We would like to thank all the generous businesses, individuals and grant making bodies who supported Derby Museums in 2023-24, through whose support we can continue to care for our region's heritage. We couldn't do it without you!

### MAJOR PROJECT PARTNERSHIPS

IMI  
Rolls-Royce plc  
Vaillant

### CORPORATE SUPPORTERS

Cosy  
MX Display  
Stowe Family Law  
Marketing Derby

### TRUSTS AND FOUNDATIONS

Weston Loan Programme with Art Fund  
The Duke of Devonshire's Charitable Trust  
The Headley Trust  
Paul Mellon Centre for Studies in British Art  
Arts Council England  
Department for Culture, Media and Sport – Wolfson Galleries Improvement Fund  
Foundation Derbyshire – The Freemasons of Derbyshire Fund  
Foundation Derbyshire – The Tom Carey Fund  
The National Lottery Heritage Fund, with thanks to National Lottery players  
Pilgrim Trust

### OUR DONORS

Our Adopt an Object supporters  
Our Buy a Bird supporters  
Our Endowment  
Campaign supporters

### OUR VOLUNTEERS

### OUR FRIENDS

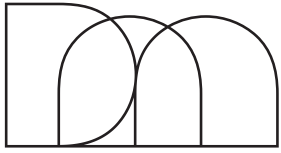
### OUR PARTNERS

1623 Theatre Company  
Aboretum Primary School  
Babbling Vagabonds  
Being Human Festival  
The Bemrose School (Primary Phase)  
Black Country Visual Arts  
British Council  
Canvas –Future Creatives  
Cathedral Quarter Business  
Improvement District  
Chartered Institute of Ergonomics and Human Factors  
Common Threads  
Community Action Derby - HAF  
Creative Mornings Derby  
Derby Asian Strategic Partnership  
Derby Book Festival  
Derby CAN  
Derby City of Sanctuary Network  
Derby College  
Derby Feste  
Derby Folk Weekend  
Derby LIVE  
Derby Local Studies and Family History Library  
Derby Poetry Festival  
Derby Virtual Schools (DCC)  
Derby West Indian Community Association  
Derbyshire Makes,  
Derbyshire County Council

Derbyshire Foundation  
Derwent Valley Mills World Heritage Site  
Disability Direct  
Dubrek Studios  
Futures International School of Luxor  
Heritage Crafts  
Indian Community Centre  
Indian Workers' Association  
John Smedley  
Laura Burrill – Every Stitch a Story  
LIV Presents  
Maison Foo  
Mash Up Derby  
National Gallery  
National Portrait Gallery  
National Saturday Club  
Pakistan Community Centre Derby  
Sinfin Asian Men's and Women's Groups  
Standing In This Place  
Sinfonia Viva  
The Derby Women's History Poetry Walk  
The Lost Boys  
The UK Ghost Story Festival  
Toasted Ceramics Fair  
University of Derby  
University of Loughborough  
Women's Work Derby  
YMCA Derbyshire  
W.W. Winter

### OUR CORPORATE AND COMMERCIAL CLIENTS AND EVERYONE WHO HELD AN EVENT IN OUR SPACES





**DERBY MUSEUMS**



**MUSEUM AND  
ART GALLERY**

**PICKFORD'S  
HOUSE**

SUPPORTED BY



**With thanks to the following photographers  
for the inclusion of their images in this report:**

Anna Rose Heaton Photography/Abi Wastie,  
Finley Jakes, Janie Airey/Art Fund, Kate Lowe Photography,  
Lamar Francois/Pictured by Lamar, Oliver Frank Chanarin,  
Oliver Taylor Photography, Pictoria Pictures, Seamus McKenna,  
Shain Bali, Visit Derby and the model railway volunteers.

**Cover image** © Oliver Taylor Photography

[info@derbymuseums.org](mailto:info@derbymuseums.org)

01332 641901

[derbymuseums.org](http://derbymuseums.org)



Derby Museums is a  
registered charity, number 1149710.

